



yarn n.
1. a spun thread,
2. a story often having
incredible elements

The Watercolours and Lace Newsletter

Volume 7

Issue # 8

Jun 2021

New Yarn

We're trialling another new yarn this month - a laceweight blend of 70% Silk and 30% Seacell™. It's a standard laceweight at 800m/100g, incredibly soft and has a wonderful sheen, making it ideal for shawls for summer and/or special occasions like weddings. The first batch is on the website here at the introductory price of £22 per 100g skein.

SeaCell™ is made from a brown algae called *ascophyllum nodosum*, also known as Knotted Wrack, which grows in the Icelandic Fjords. Through a solvent-spinning process, cellulose is dissolved and mixed with washed and filtered seaweed, to create the fibre.

It's breathable, absorbent, lightweight and soft, as well as being 100% biodegradable.

The seaweed is collected using a special machine with blades that do not cause any permanent damage. Each section of seaweed is harvested only once every four years to allow time for regrowth, and cut above the regenerative part of the plant to ensure that it isn't permanently damaged. Cutting in this way encourages the plant to sprout more.

The seaweed in SeaCell™ is dried naturally and not subject to any chemical treatment. Since seaweed is renewable and the production method is energy-efficient, the fibre is extremely eco-friendly.

Simply Crochet

For the crochet fans out there, look out for the next issue of Simply Crochet, due for publication on 8 July, as it should feature a design using one of our yarns! There will also be an offer on the yarn needed to make it.

Visit our website at www.watercoloursandlace.co.uk

© 2020 – "A Twisted Yarn" is published by Watercolours & Lace, 18 Pristow Green Lace, Tibenham, Norwich, NR16 1PX

Mystery Knitalong - Yvaine

You can now subscribe to our latest Mystery Knitalong, either on Ravelry or via our website. The pattern pdf is available at £3 until the MKAL starts on 26 July, at which time it will increase to the full rate of £4.50.



Yvaine, (pronounced “ee-vane”) a Scottish name meaning “Evening Star”, is a lovely rectangular stole using traditional Shetland lace stitches, which can be knitted in a cobweb or standard laceweight. Julie has used 100g/1,600m of our Shetland Cobweb Lace in Iris Under a Summer Sky for the 1-ply version and 200g/1,600m of our

BFL Purest Lace in Foxgloves at Dusk for the 2-ply stole. Purists will enjoy working the design in these pure wool yarns, as they do show off the lace stitches particularly well, but other fibres and blends can be used very successfully, as long as they block well.

Caption: Above image (centre) is Shetland Cobweb “Iris Under a Summer Sky” and Blue-faced Leicester (right) in “Foxgloves at Dusk”;

The stole is ideal as an introduction to Shetland lace but not recommended for a beginner to lace as, although it is knitted on a garter stitch ground, there are not many rest (plain) rows in the pattern! It’s made using the modern centre-out method, starting with a provisional cast on and working the main centre pattern which is the easiest of the Shetland stitches used. Another slightly more complex design is then worked at both ends, followed by a third still more challenging design to complete the main part of the stole. A knitted-on edging is then worked flat in rows by using the held stitches at either end of the stole and picking up stitches along each long edge, with just a few stitches to be grafted together when the edging is complete. The clues will be released as follows:

- Clue 1 (centre section) Monday 26 July
- Clue 2 (second pattern) Monday 9 August
- Clue 3 (third pattern) Monday 16 August
- Clue 4 (edging) Monday 23 August

The finished samples will be available to view on our stand at the Southern Wool Show in Newbury on 4-5 September. We plan to have a prize draw for participants in the Knitalong, so don’t forget to post shots of your finished stole in due course.

Julie is busy restocking both of the yarns she used for her samples and will be dyeing skeins to order in any of the colours shown on the website - please get in touch if you’d like to order your yarn for this project. She recommends a yarn which is not too variegated or multi-coloured, as these don’t always suit a garter stitch ground. There will be a thread on Ravelry for progress pics and you will also be able to add and view these in the Facebook group here. We hope you enjoy knitting this design and can’t wait to see your yarn choices and progress in due course.

Visit our website at www.watercoloursandlace.co.uk

© 2020 – “A Twisted Yarn” is published by Watercolours & Lace, 18 Pristow Green Lane, Tibenham, Norwich, NR16 1PX



Customer Project

Diana Wallis from Yorkshire sent us some photos of a shawl she has knitted using some of our Yarn Club colourways.

Caption Colours

The pattern is Heather Blossom by Viveka Velupillai from issue 163 of the Knitter, adapted a little as Diana did not have enough yarn for the final repeat. The colours reminded her of a visit to Skye. We think it's beautiful - great work, Diana.

Sales to EU Countries

New rules come into force on 1 July whereby all orders up to the value of Eur 150 sent to customers in the EU will attract VAT at the rate payable in the buyer's country. This has applied to digital downloads for several years (which is why we only supply pattern downloads via Ravelry) but is now being changed to include physical goods too. We very much regret that, as a small business, the admin and expense that would be required to enable us to comply with this change via our own website, to both collect and pay the VAT, means we are simply unable to continue taking direct orders from EU customers at this time.



We can, however, sell to the EU via our Etsy shop, as Etsy will add the relevant VAT and pay it direct to the relevant tax authorities. We would therefore ask all of our customers in the EU to kindly contact us when you wish to place an order, and we will set up a custom listing for you on our Etsy site, where you will be able to see the full cost before you commit to buying. (We no longer run an extensive shop on Etsy due to the high level of fees charged to sellers.) This should prevent you from being charged the VAT and possibly an extra handling charge when the goods are delivered to you.

For those of you who have subscribed to our latest Yarn Club or our Advent Calendars, we will be writing to you direct in the next few days to advise how we will go about delivery of these items.

Place	Colourway	% 2020
1	Golden Sunset	3.2%
2	Precious Metals	2.5%
3	Hyacinths in Blue	2.4%
4=	A Bit Black over Will's Mother's	2.0%
4=	Fiery Summer Sunset	2.0%
4=	On a Clear Day	2.0%
7	Bitter Chocolate Truffle	1.9%
8=	Blue Iris	1.7%
8=	Deep Lavender Sky	1.7%
10=	Christmas Pudding	1.6%
10=	Moody Skies over Mull	1.6%
10=	Rhubarb Crumble	1.6%
10=	Road to the Isles	1.6%
10=	Very Berry Pavlova	1.6%
15=	Chocolate Caramel	1.5%
15=	Glorious Glencoe	1.5%
15=	Silvery Stars	1.5%
15=	Summer Garden	1.5%
19	Blueberry Pie	1.3%
20=	Jade Peacock	1.2%
20=	Norfolk Flint	1.2%

Top of the Pops

This month we are looking at colours. We are often asked - at shows and via e-mails - how many colours we have, and we can tell you that there were 70 new colours added in 2020 and we currently have 580 colours available, ranging from "*A Bit Black over Will's Mother's*" to "*Zing Goes the Spring*".

Of course, some of those colours may not be available in the yarn you want when you are browsing around, but if you can tell us the colour name, or the dyelot, then we will be able to retrieve the recipe and dye a skein for you. Our most popular colourways are shown in the table.

Julie gets a lot of fun from inventing the colour names that she uses. And she is always amazed that using the same recipe on two different fibres can yield such different results, leading to a completely new colour name for an Alpaca laceweight compared to a Yak 4-ply, for example.

Next time, we will look at our accessories, which we last looked at in December 2019.

Visit our website at www.watercoloursandlace.co.uk

Yarn Club Emerald Isles

All skeins for our current club, The Emerald Isles, were despatched early last week. Some of our overseas subscribers may not yet have received their packages, so we'll share pictures of the colourways next month.

Did You Know - #75 Lonk

The **Lonk** sheep breed can be traced back for several centuries with one existing flock having full records to 1740. The Lonk Sheep Breeders Association was established in 1905.

For farmers who have pride in their stock, the Lonk are very good looking free ranging sheep of the mountain class. Being strong boned and well fleeced, the Lonk is an agile sheep well able to withstand most exacting climates.

Improved and pure bred by farmers in the Lancashire and Yorkshire Pennines since the inception of the flock book for the breed in 1905, its main qualities of hardiness, size, health and freedom from disease, colour, depth and uniformity of coat and its longevity have been rigorously preserved.



The Lonk wether (see Note) will grow to weights of 40-46Kg and are much sought after. It has been used by one of the leading chefs in the country and won the Great British Menu for the "Lonk Hotpot".



The **Lonk** is a domestic sheep breed, found in the hills of the central and south Pennines, in the north of England. The name "Lonk" derives from the Lancashire word "lanky", meaning long and thin, usually in a person. Their range extends into only three counties: Lancashire, Yorkshire and Derbyshire. Also known as the **Improved Haslingden**, the Lonk is of the Blackfaced Mountain type, and is similar to the Derbyshire Gritstone, apart from the absence of horns in that breed.

Characteristically, Lonks have black-and-white faces and their long legs are well suited to the Pennine environment of rocky hills and peat bogs. They are extremely hardy. The Lonk is raised for carpet wool and for meat. The Lonk Sheep Breeders' Association is based in Burnley, Lancashire. There were fears during the 2001 epidemic of foot-and-mouth disease in Great Britain that the Lonk breed would become extinct but this did not happen and the breed still survives.

Key Characteristics

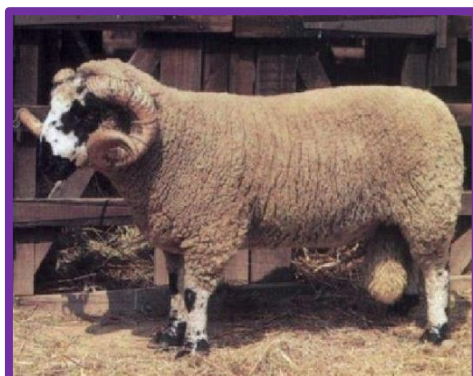
The Lonk is one of the largest hill breeds native to the UK. It has clear black and white legs and face, with the two colours not merging. They have a white fleece that should be totally free of any kemp. Both genders are horned.

Uses

The Lonk is able to produce a very good quality lamb.

Due to the breed's confirmation the Lonk ewe crossed with downland breeds regularly produces quick growing twins which can mature in the autumn to produce a high quality tasting product. Lonk ewes have gained an enviable reputation for producing the right tight coated lamb with the extra length and the right fat-lean combination which is sought after by today's selective markets.

Note: wether is a castrated ram



Visit our website at www.watercoloursandlace.co.uk

© 2020 – "A Twisted Yarn" is published by Watercolours & Lace, 18 Pristow Green Lane, Tibenham, Norwich, NR16 1PX

On the Road Again ... 2021

First, we will be heading south to Newbury Racecourse for the Southern Wool Show. Then three weeks later, we will travel to Yorkshire for Yarndale. At the moment, the government's Road Map is still being followed, so we look forward to seeing you there!

On the Road ... 2021

All shows confirmed, except those marked (TBC)
All shows with a grey background have been cancelled

YarnLace

4-5 Sep (TBC)	Southern Wool Show	Newbury Racecourse
25-26 Sep (TBC)	Yarndale	Skipton Auction Mart

Visit our website at www.watercoloursandlace.co.uk

© 2020 – “A Twisted Yarn” is published by Watercolours & Lace, 18 Pristow Green Lace, Tibenham, Norwich, NR16 1PX